

MCQ Rehab Cost Approximation Report 2001-2019 20th October 2019

The numbers below represent a very approximate best-guess cost to rehabilitate the Mt Coot-tha Quarry. This information was made by local residents who the BCC have excluded from all numeric data.

Neilsens High Quality Basalt	Estimated MCQ Mine Gate Cost/tonne
5mm gravel casual gate price	
Undelivered Casual Mine Gate price	25 \$/tonne

MCQ Gravel Sales Information

Based upon data provided by Judy Magub, we were able to calculate an approximate Tonnes Per Blast.
<http://www.bantheblasting.org/MC-QAG-Reports/2017-Report/APPENDIX-II-MagubMCQLetterAndFaxesToQAG.pdf>
 (In 2003 cr Magub was not given the full year data, so we estimated the missing 3 months.)

Estimated MCQ Sales data	2019 prices	Please note that earlier year profit is based upon 2019 prices.
5mm Gravel Sales Prices	\$/tonne	Hence earlier year profit would be less.
Mine Gate Sales/Tonne	25	
Mine Gate Cost/Tonne	-19	
Mine Gate Profit/Tonne	6	

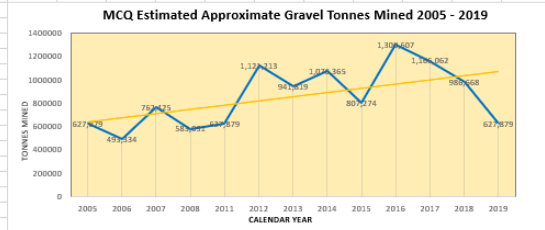
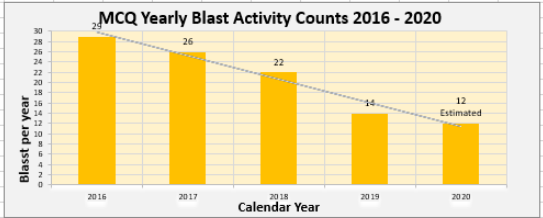
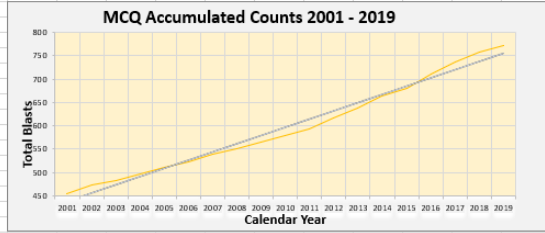
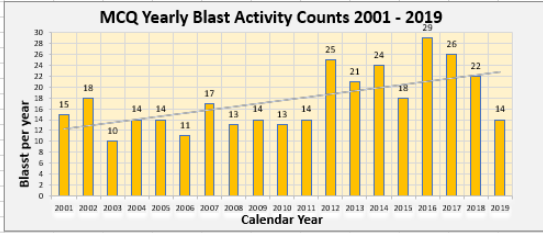
1. Cr Magub data is Financial Year as provided in 2003 -> approx Tonnes/Blast. Our data uses calendar year.
2. Brisbane 5mm gravel prices provided approx MCQ 5mmGravel sales data
3. Because gravel prices are from 2019, we back-calculated the CPI Annualised Profit (2019 back to 2001).

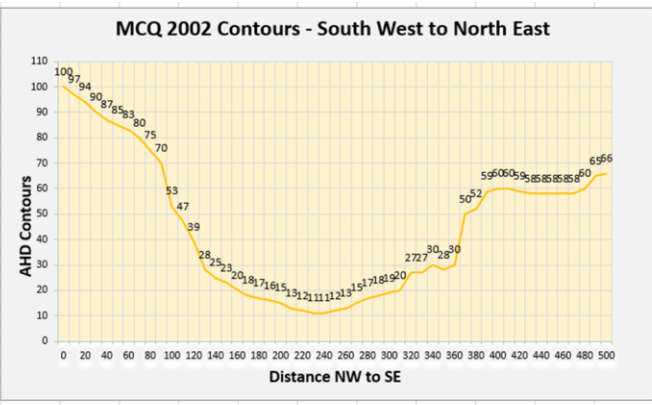
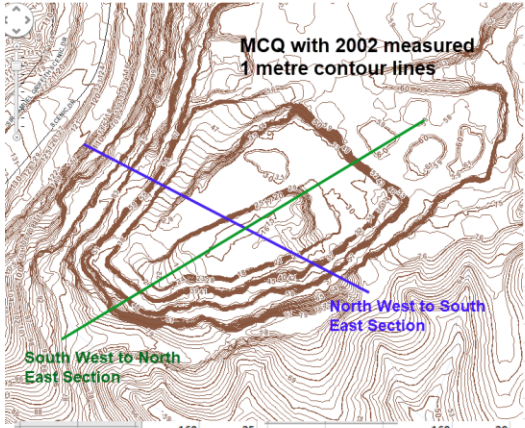
Year	Year	Blasts per year	total		FY Tonnes	Tonnes/Blast	Total	Total	Total	CPI 2%	98.00% CPI	Annualised	Profit
			count										
Magub	2001	15	455	743838	49589								
Magub	2002	18	473	750518	41695								
Magub	2003	Fy extrap	10	483	589127	58913							
Magub	2004		14	497	408755	29197	Total	Total	Total				
				average	44849	Tonnes	Sales	Profit	Year-2% C	Profit	per blast		
Year count			total	2492238			SMil	SMil		SMil			
1	2005	14	511			627879	15.70	3.77	72.00%	2.71	193745.66		
2	2006	11	522			493334	12.33	2.96	74.00%	2.19	199127.48		
3	2007	17	539			762425	19.06	4.57	76.00%	3.48	204509.31		
4	2008	13	552			583031	14.58	3.50	78.00%	2.73	209891.13		
5	2009	14	566			627879	15.70	3.77	80.00%	3.01	215272.96		
6	2010	13	579			583031	14.58	3.50	82.00%	2.87	220654.78		
7	2011	14	593			627879	15.70	3.77	84.00%	3.16	226036.6		
8	2012	25	618			1121213	28.03	6.73	86.00%	5.79	231418.43		
9	2013	21	639			941819	23.55	5.65	88.00%	4.97	236800.25		
10	2014	24	663			1076365	26.91	6.46	90.00%	5.81	242182.08		
11	2015	18	681			807274	20.18	4.84	92.00%	4.46	247563.9		
12	2016	29	710			1300607	32.52	7.80	94.00%	7.34	252945.72		

12	2016		29	710		1300607	32.52	7.80	94.00%	7.34	252945.72		32
13	2017		26	736		1166062	29.15	7.00	96.00%	6.72	258327.55		29
14	2018		22	758		986668	24.67	5.92	98.00%	5.80	263709.37		24
15	2019	Cyextrap	14	772		627879	15.70	3.77	0.00%	3.77	269091.2		15
		Total	332		Approximate Totals	12333346	308	74		65	3471276.4		230
		Average	22		Average	822223.1	21	5		4	231418		
	Roma St	Millions			Zipline Annual Benefit		8			Hole Area b	Length	Width	Area s
	2001	72			Area	Cost	Cordell			1946	150	50	5,8
	2002	75			Roma St Costs	Map HA	\$ mil	CHIP		2002	300	170	40,0
	2003	78				16		4%		2012	400	300	94,;
	2004	81			2001 Cost \$mil	72		1.04		2019	550	350	151,;
	2005	84							Pi		3.14		
	2006	88			MCQ Costs	Map HA	Surface HA		Ha		10,000		
	2007	91				30	46		Acres		4,046		
	2008	95			Roma St Extrap cost	308	472						
	2009	99			Upside Contingency	152	128						
	2010	102			Total	460	600						
	2011	107			Annual BPI	18	24						
	2012	111			Total NoAction Cost	26	32						
	2013	115											
	2014	120											
	2015	125											
	2016	130			2026 Example					2030 Example			
	2017	135			Roma St Costs	Map HA	\$ mil			Roma St Costs	Map HA	\$ mil	
	2018	140				16					16		
	2019	146			2001 Cost \$mil	72				2001 Cost \$mil	72		
	2020	152											
	2021	158			MCQ Costs	Map HA	Surface HA			MCQ Costs	Map HA	Surface HA	
	2022	164				30	46				30	46	
	2023	171			Roma St Extrap cost	360	552			Roma St Extrap cost	421	646	
	2024	177			Upside Contingency	152	128			Upside Contingency	152	128	
	2025	185			Total	512	680			Total	573	774	
	2026	192			Annual BPI	20	27			Annual BPI	23	31	
	2027	200			Total NoAction Cost	28	35			Total NoAction Cost	31	39	
	2028	208											
	2029	216			Total Rock Removed by the end of 2019								
	2030	225			Average rock per blast		44,849 tonnes						
	2031	234			Total Blast Count		772 since c1985						
					Total rock removed		34,623,067 tonnes						
					Truckloads		3,462,307 10 ton trucks						
					Commercial value (todays price)	\$865,576,678	The annualised amount would be much less.						
						\$866 Million							

81	2031	234		Total Blast Count	772 since c1985								
82				Total rock removed	34,623,067 tonnes								
83				Truckloads	3,462,307 10 ton trucks								
84				Commercial value (today's price)	\$865,576,678	The annualised amount would be much less.							
85					\$866 Million								
86	Total Income from Rock Removed from 722 blasts since c1985												
87	Total No of Blasts	722											
88	Total Years	35											
89	Avg Blasts per year	20.63	Average Blasts/year										
90	Avg Rock	44,849	Average Tonnes/blast										
91	Avg Rock/year	925,161	Tonnes										
92	Total Rock Removed	32,380,640	Tonnes	3 million truckloads									
93	Total value Smil	\$809.52	2019 price total value from all blasts since 1985										
94													
95	2019 rock price	\$25	S/Tonne										
96	2019 rock avg value	\$23,129,029	S/Year										
97	Average Annual Value	\$23.129	Smil/year										
98	CPI %	2%											
99	CHIP	4%											
100				Average Value is adjusted by CPI and CHIP shows the average amount reduced every year in									
101	Total Rock Sales Value since 1985 \$million			value less CPI %	2019	2018	2017	2016	2015	2014	2013	2012	
102	All Rock at 2019 prices	810	Smil total	value less CHIP %	100%	98%	96%	94%	92%	90%	88%	86%	
103	2% Inflation Adjusted	534	Smil total	Annual Value CPI Adj	\$23.13	\$22.67	\$22.20	\$21.74	\$21.28	\$20.82	\$20.35	\$19.89	
104	CHIP Inflation Adjusted	519	Smil total	Annual Smil Value CHIP Adj	\$23.13	\$22.20	\$21.74	\$21.28	\$20.82	\$20.35	\$19.89	\$19.43	
105													
106													

<u>RTI 2017/18-80 Total MCQ Exports 2001-2010</u>									
	Tonnes	Tonnes	Volume m ³	Years	Aggregate weeks	wk days	truck load weight		
				10	75.00%	50	250	20	
Total Material	5,150,394								
10 year average	515,039			Work Day	2,060	Truck/day	103		
Avg Aggregates		386,280		Work Day	1,545	Truck/day	77		
MCLR 10 Year Total	3,856,974								
MCLR 10Yr Average		385,697							
2001 - 2017 totals									
MCLR 19 year Total	14,825,584			19					
Average		780,294		Work day	3121.176				
Total Material	19,767,446								
Total volume			59,302,338	= Approximately 60 million Cubic Metres					
20Tonne Trucks	988,372			Yearly	52,020				
				Daily	208				
Yearly after 2000									
Average Tonnage		1,040,392							
Average Volume			3,121,176						
20Tonne Trucks/yr	52,020			Daily	208				





NW to SE		160	25	SW to NE		160	20
Distance	Height	170	22	Distance	Height	170	18
0	125	180	21	0	100	180	17
10	127	190	20	10	97	190	16
20	123	200	15	20	94	200	15
30	120	210	10	30	90	210	13
40	110	220	15	40	87	220	12
50	100	230	17	50	85	230	11
60	95	240	19	60	83	240	11
70	92	250	21	70	80	250	12
80	87	260	30	80	75	260	13
90	79	270	35	90	70	270	15
100	67	280	40	100	53	280	17
110	60	290	45	110	47	290	18
120	40	300	48	120	39	300	19
130	37	310	50	130	28	310	20
140	30	320	60	140	25	320	27
150	28	330	70	150	23	330	27
		340	80			340	30

